



Facilities Referendum Project Update

December 19, 2022

Lien Elementary School & Early Learning Center

Planned Building Improvements (Question #1)

Building and Site Maintenance

- Repair the exterior masonry
- Replace the 1967 roof section
- Add hot water piping to the classrooms

Building Code Impacts

- Renovate to meet accessibility requirements

Building Finishes and Equipment

- Replace the remainder of the flooring
- Replace classroom casework

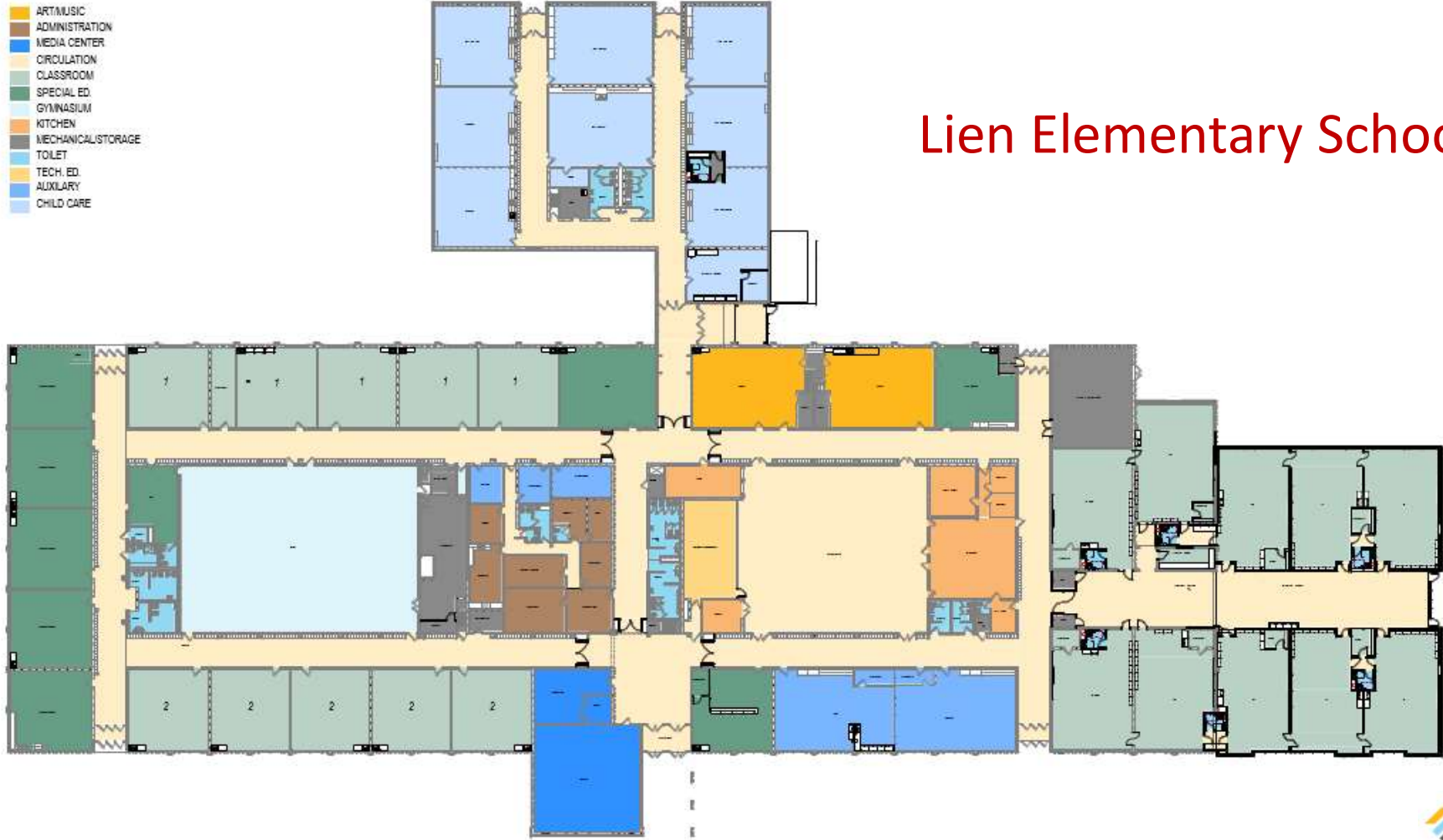
Lien Elementary School & Early Learning Center

Planned Renovations, Addition, Safety & Security Updates (Question #2)

- Add a Parking Lot, Relocate the Main Entry, and Relocate the Playground
- Upgrade the Mechanical/ Electrical Rooms and the Receiving Area
- Relocate the Early Learning Center for Additional Space and Security
- Relocate the Art/Music and Administration Areas
- Renovate Classrooms
- Add Classrooms

Lien Elementary School

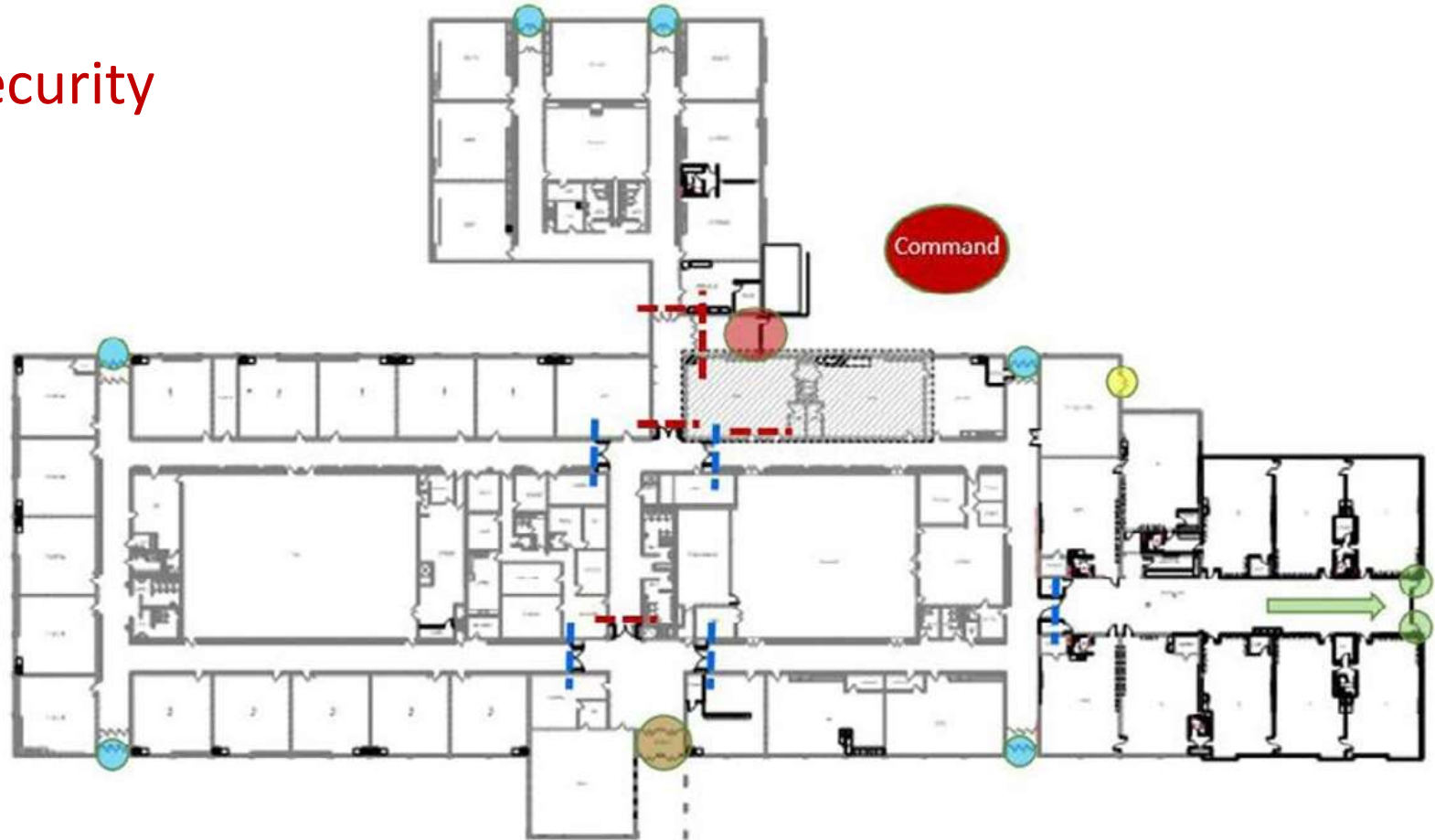
- ART/MUSIC
- ADMINISTRATION
- MEDIA CENTER
- CIRCULATION
- CLASSROOM
- SPECIAL ED.
- GYMNASIUM
- KITCHEN
- MECHANICAL/STORAGE
- TOILET
- TECH. ED.
- AUXILIARY
- CHILD CARE



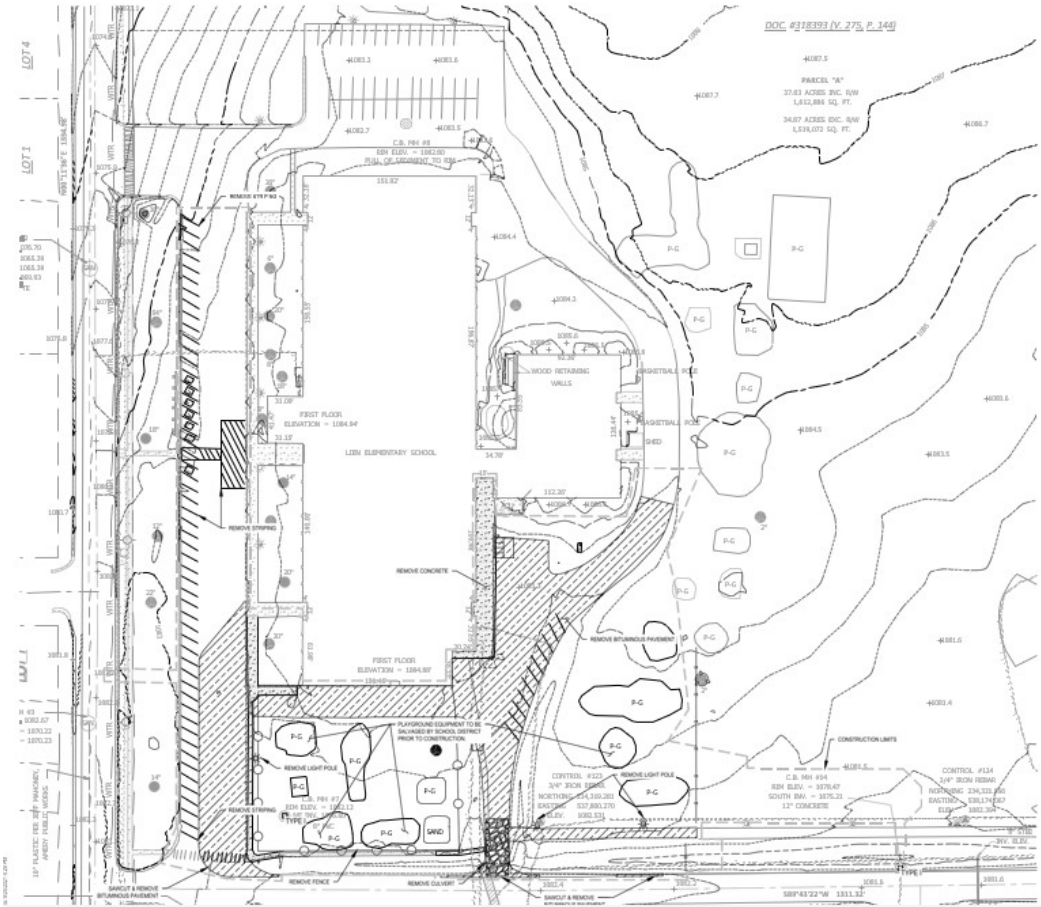
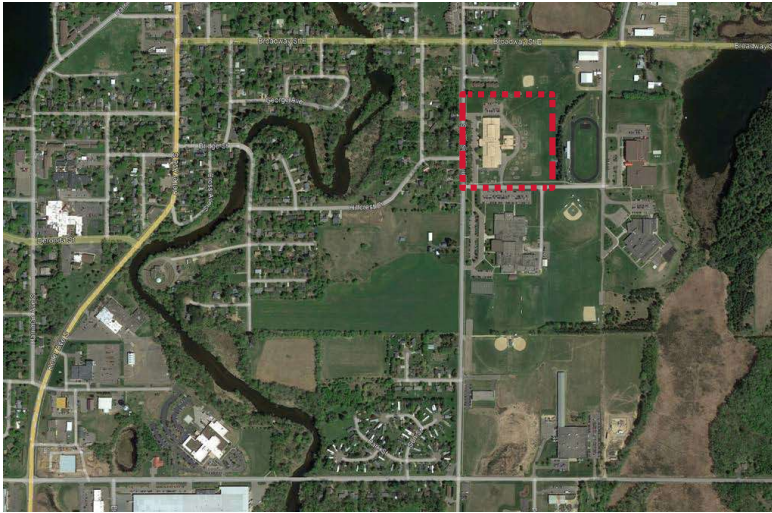
Safety and Security

Safe and Secure - Key

-  **Main Entry: First Level Exposure**
Remains as is but reaction times remain concern
-  **Back Entry: Second Level Exposure**
Connected to the Second Level Exposure
-  **Side Entries: Third Level Exposure**
Try to avoid putting kids in this area.
Rooms in this area should shelter in place
-  **Side Entries: Fourth Level Exposure**
Room excavation route
-  **Multi-Room: Fifth Level Exposure**
Other rooms can evacuate through room
-  **Classroom: Sixth Level Exposure**
Evacuates only the room
-  **Primary Doors of Exposure**
Evacuates only the room
-  **Secondary Doors of Exposure**
Evacuates only the room
-  **Law Enforcement Locations**
Greatest Primary Exposure if Third Level hallways remain secure



Site Improvements



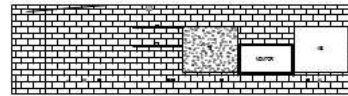
Mechanical Rooms



5.1 Mechanical Rooms

- 2. New Classrooms
- 3. Group Learn
- 4. New Toilets
- 5. Child Care
- 6. Misc. Rooms
- 7. Admin. Alternate
- 8. Interior Finishes
- 9. Exterior Envelope

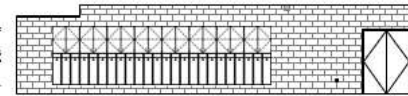
New Classrooms



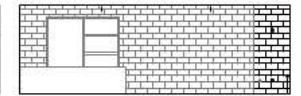
12 B, BRK - TYP. B, BK CLASSROOM - NORTH BAY



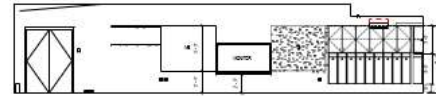
11 B, BRK - TYP. B, BK CLASSROOM - EAST BAY



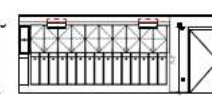
10 B, BRK - TYP. B, BK CLASSROOM - SOUTH BAY



9 B, BRK - TYP. B, BK CLASSROOM - WEST BAY



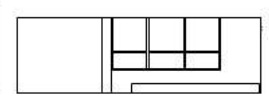
8 C, BK - TYP. C, CLASSROOM - NORTH BAY



7 C, BK - TYP. C, CLASSROOM - EAST BAY



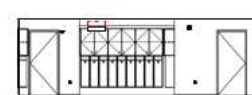
6 C, BK - TYP. C, CLASSROOM - SOUTH BAY



5 C, BK - TYP. C, CLASSROOM - WEST BAY



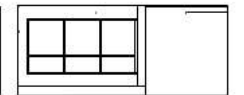
4 E, BK - TYP. E, CLASSROOM - NORTH BAY



3 E, BK - TYP. E, CLASSROOM - EAST BAY



2 E, BK - TYP. E, CLASSROOM - SOUTH BAY



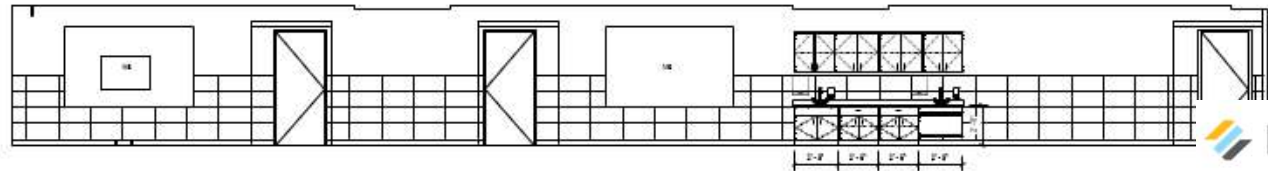
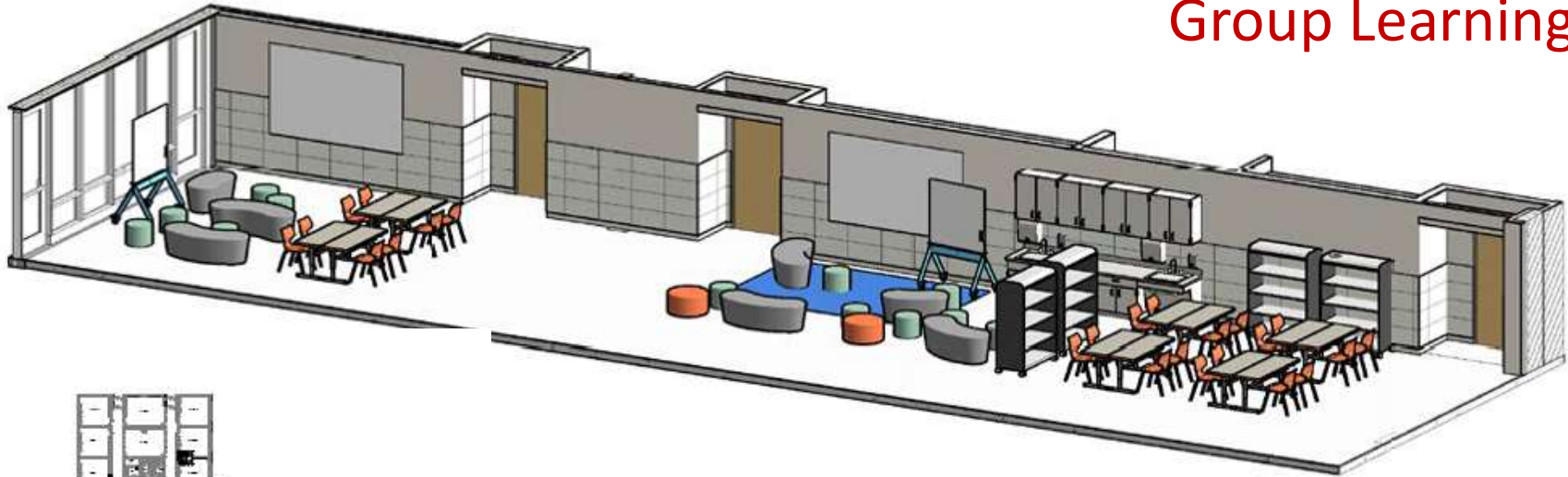
1 E, BK - TYP. E, CLASSROOM - WEST BAY







Group Learning



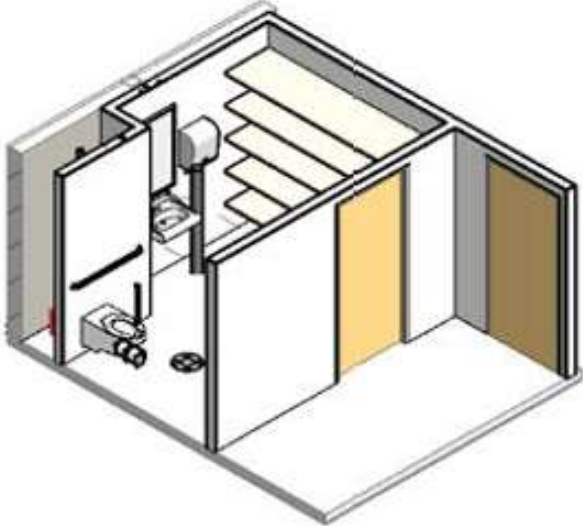




New Toilets



Typical Toilet Room



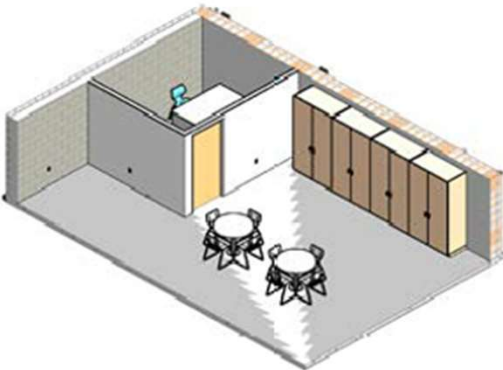
Toddler Toilet Room



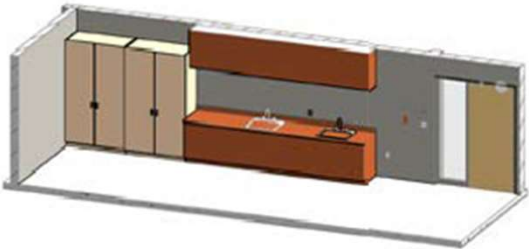
Child Care



Break Room Iso - SE

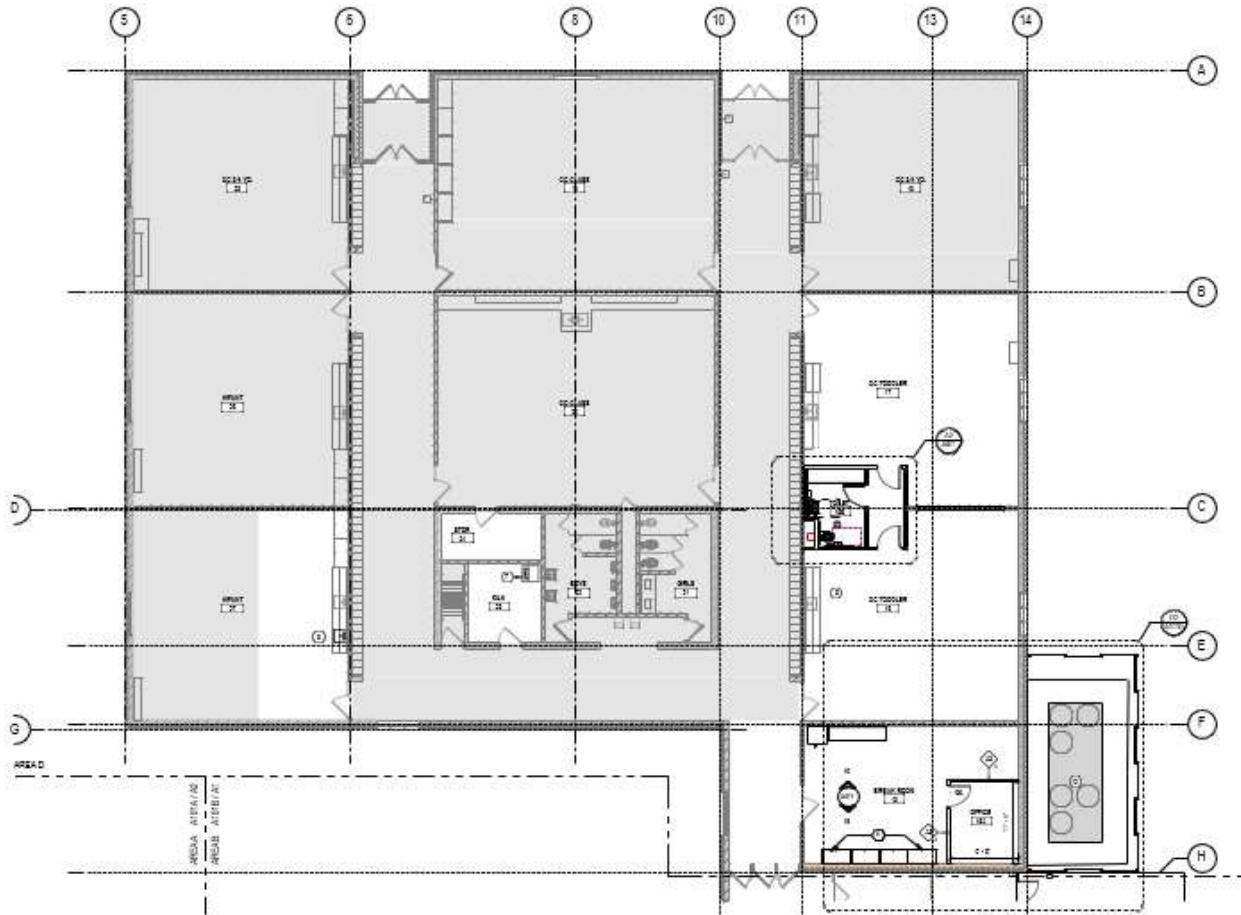


Break Room Iso - NW

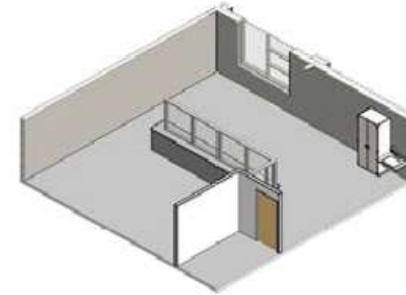
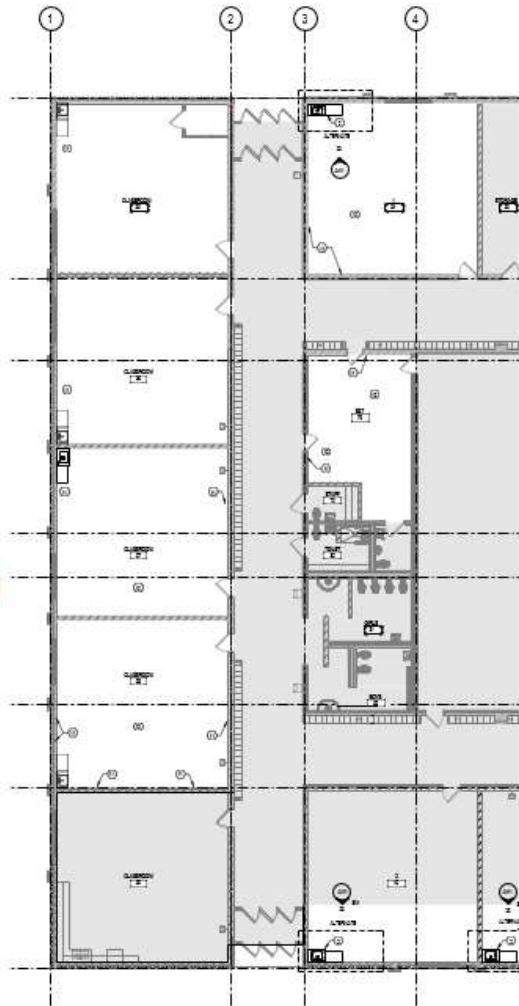


Additional sink in Infant Room

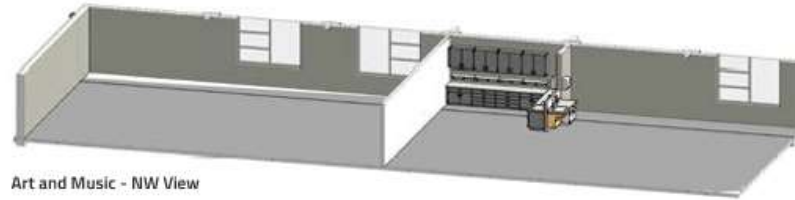
Child Care



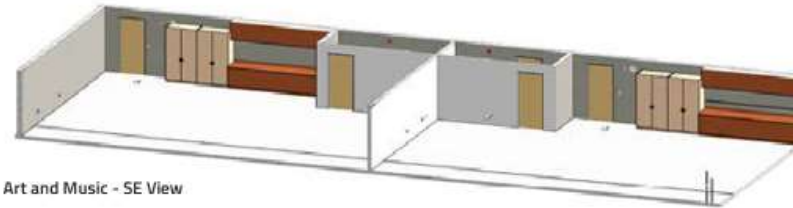
Misc. Rooms



EBD Room



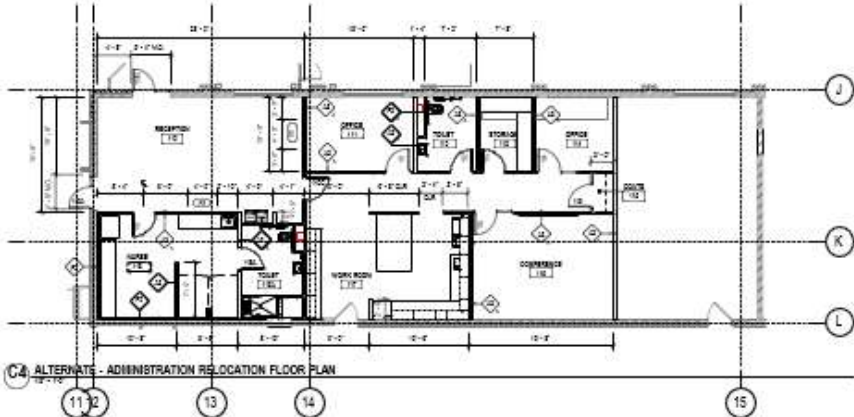
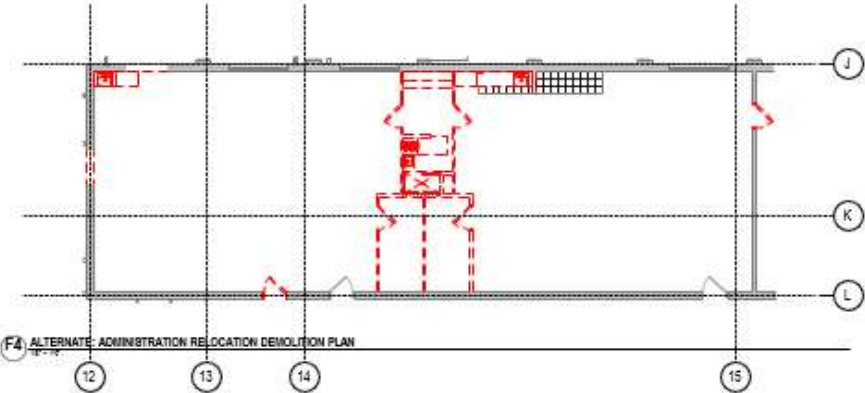
Art and Music - NW View



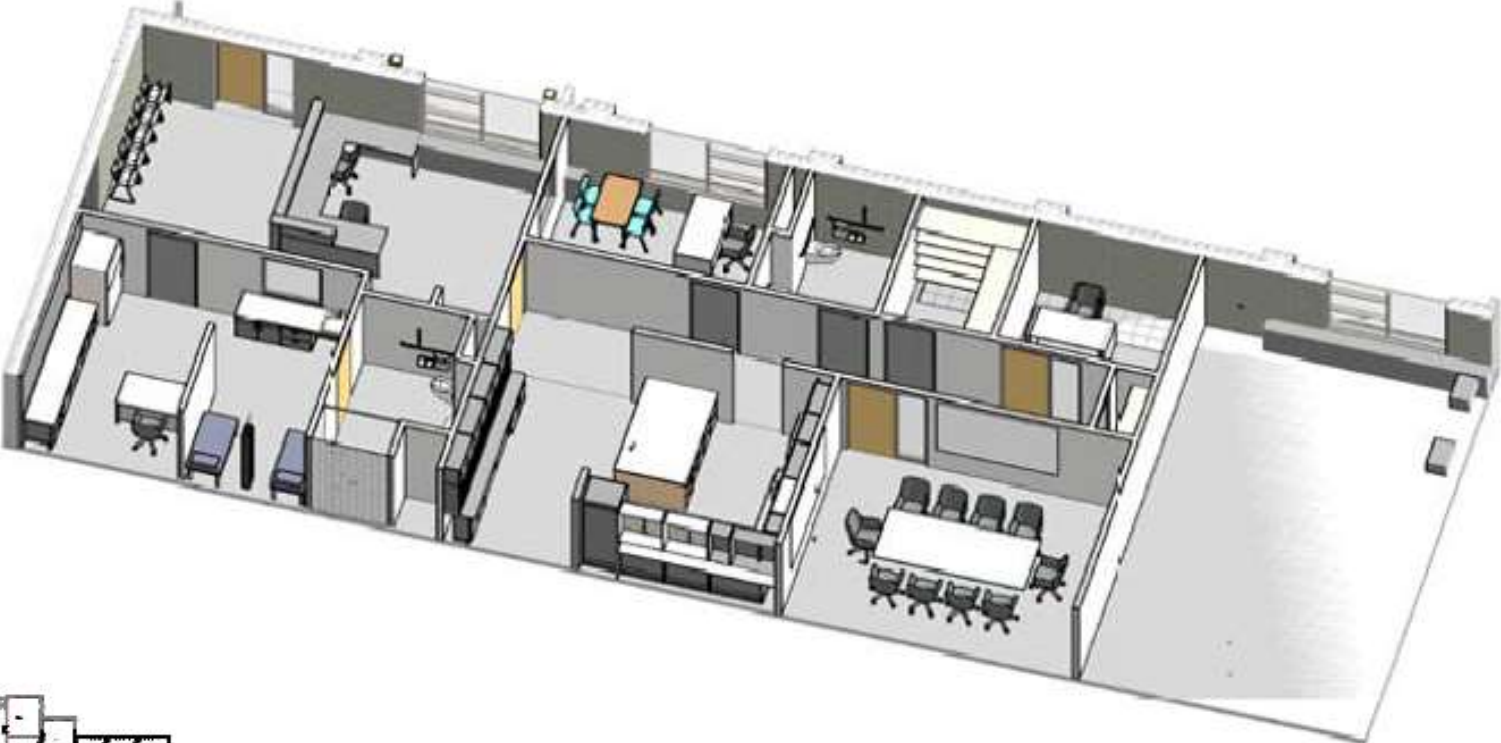
Art and Music - SE View



Admin Alternate



Admin Alternate



Interior Finishes

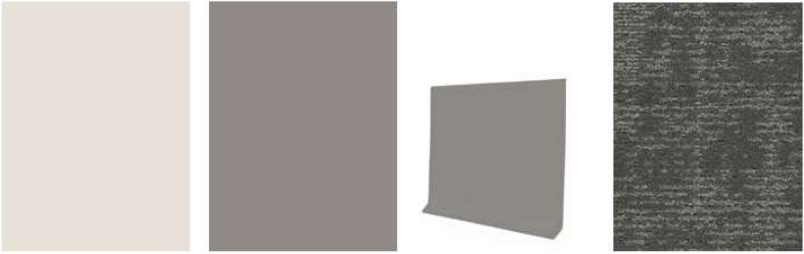


Accent Accent Accent Accent

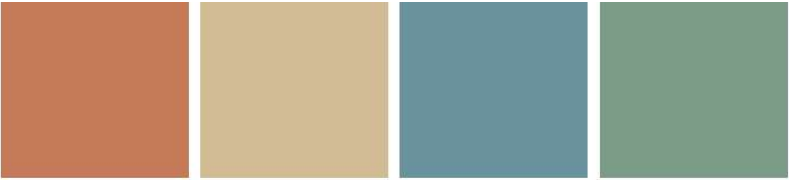


Accent Accent Accent

Luxury Vinyl Tile



Paint - General Walls/Ceiling Paint - Door Frames Wall Base Carpet



Paint - Accent Paint - Accent Paint - Accent Paint - Accent

PAINT



Counter Top Plastic Laminate Plastic Laminate

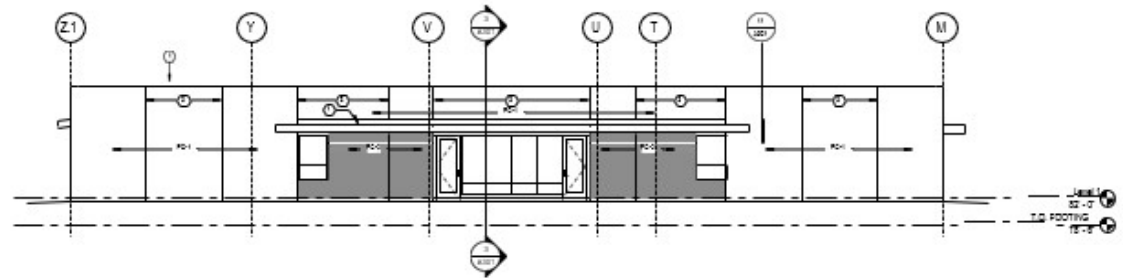
CASEWORK



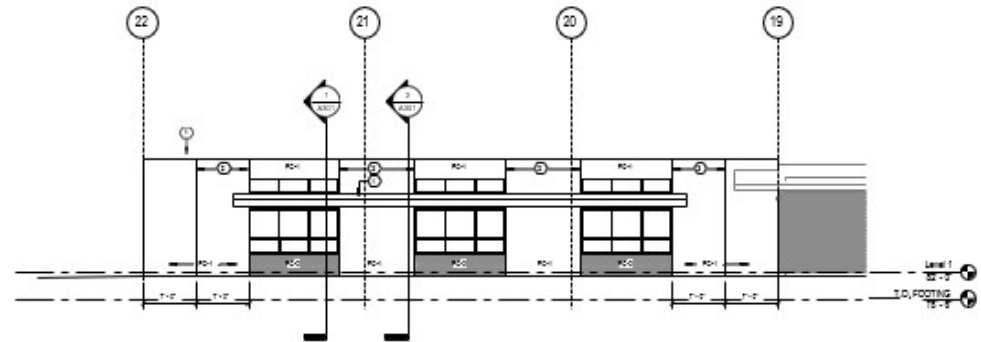
TILE

Exterior

- Roof to be replaced in its entirety
- Roof scope includes the removal of the existing Duralast roofing material and replacement with a membrane system
- Roof on addition will be a tectum decking



2 SOUTH ELEVATION
19-218



3 EAST ELEVATION
19-218







Projected Timeline for Major Facilities Projects

DESIGN	Now – September 2022	User group meetings and site visits
	June 23, 2022	Schematic design drawings to KA for estimating
	August 25, 2022	Design development drawings to KA for estimating
BIDDING	November 23, 2022	Bidding documents to KA
	November 28 – December 15, 2022	KA bidding period
	December 22, 2022	Bid deadline (HS)
	January 26, 2023	Bid deadline (ES)
	February 6, 2023	Guaranteed maximum price (GMP) to the School District
CONSTRUCTION	April/May/June 2023	Construction begins (HS)
	September 2023	Construction begins (ES)
	September 2023	Intermediate/Middle School projects complete
	August 2024	Elementary/Early Childhood projects complete
	August 2024	High School projects complete